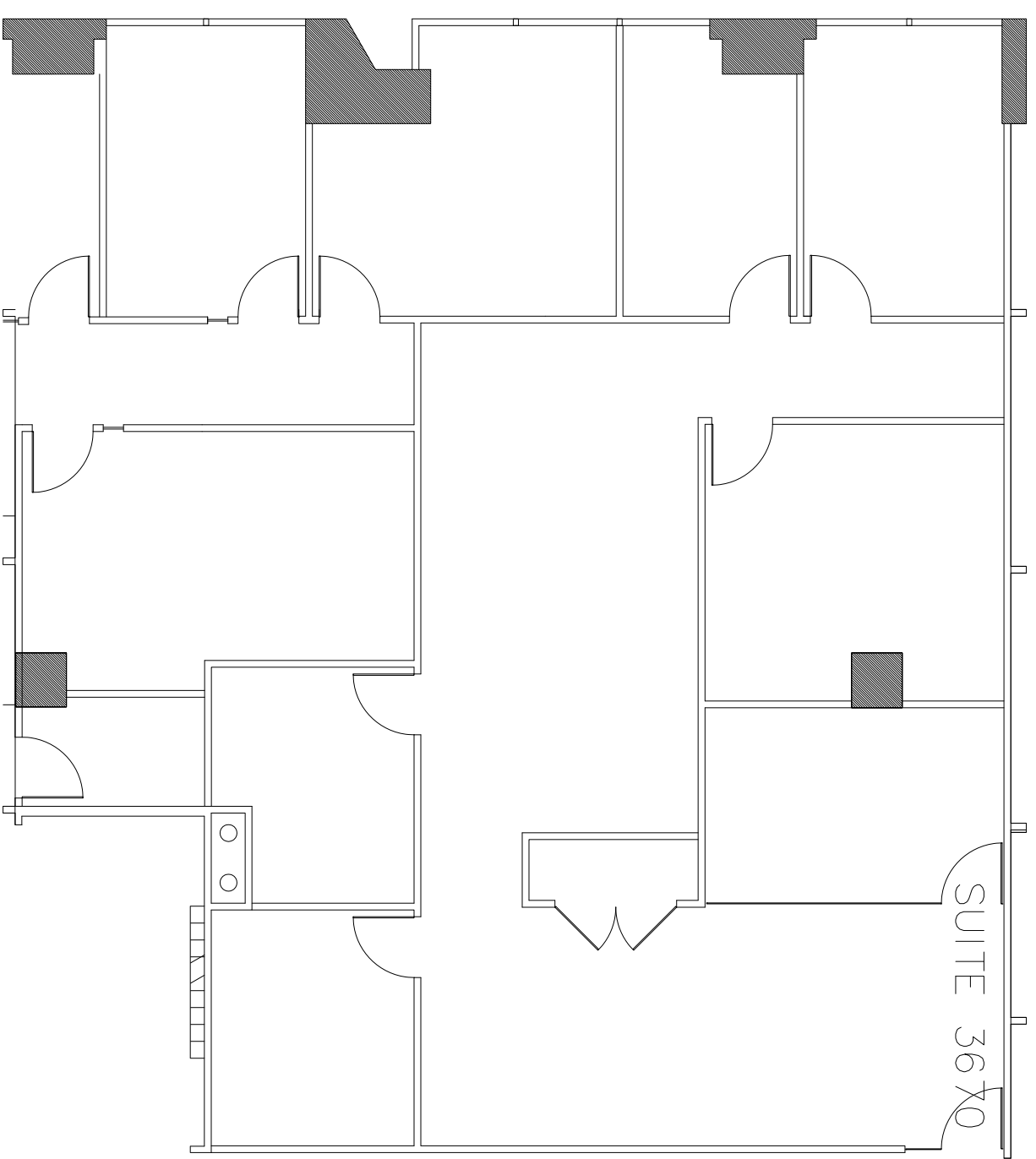


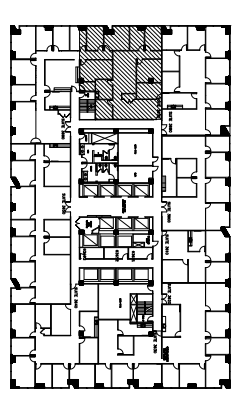
| Revision | Emission |      |
|----------|----------|------|
|          |          |      |
|          |          |      |
|          |          |      |
|          |          |      |
|          |          |      |
|          |          |      |
|          |          |      |
|          |          |      |
|          |          |      |
|          |          |      |
| no.      | Issue    | date |



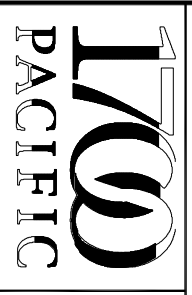

**Suite 3670**  
 SCALE: 1/8" = 1'-0"  
 (11x17)

2,990 RSF  
 SQUARE FOOTAGE IS APPROXIMATE  
 AND MUST BE FIELD VERIFIED

**KEY PLAN**



Title:  
 36th Floor Plan  
 Suite 3670



1700 Pacific  
 DALLAS, TX 75201  
 TEL: 1-888-OLYMBEC  
 WWW.OLYMBEC.COM

Scale: N.T.S.  
 Drawn By:

Date:  
 Project Name and Location:  
 1700 Pacific  
 Dallas, TX

Room #:  
 #3670

\*Note That All Dimensions Are Approximate and subject to change without notice